



# AMTECH POWER ENGINEERING PVT. LTD.

***"Quality Control  
Building trust, one  
Product at a time."***



- Electrical Panel Manufacturing
- Mep Projects & Solutions
- Electrical Testing & Commissioning
- Electrical AMC Services & Maintenance



Electrical Panel  
Manufacturing



AMC Services &  
Maintenance



Testing &  
Commissioning



MEP Projects  
/ Solutions



Save Electricity, Save Money, Save Environment

[www.amtechpower.co.in](http://www.amtechpower.co.in)



# ABOUT THE COMPANY

APE commenced its operation in 2004, with a broad vision of quality and innovation, within the domain of Electrical Services, MEP Projects and Solutions, AMC Services and Maintenance, Retrofitting of Electrical Switchgears, Power Quality Analysis, Electrical Energy Audit and Solutions. We have achieved a plethora of milestones under the dynamic guidance of our mentor and director Mr Amit Sharma, who has a creditable experience of more than 20 years in the field of Electrical Engineering and other solutions.

We were doing well with electrical projects and maintenance subsequently we observed that control & distribution panels play a big role in engineering and automation as well as it affects efficiency and cost of an electrical system. So we set up our manufacturing unit Amtech Power Engineering Pvt. Ltd. (APEPL) in 2017 and introduced precise, ingress protected, cost effective and power efficient panels in the market. Today, we are CPRI approved & ISO (9001:2015) certified manufacturing company and a licensed contractor. We hold customised engineering skills which consist of design, services, L.V Panel manufacturing, MEP Projects, Power quality analysis, Electrical energy audit, Testing, Commissioning, AMC Services & Maintenance.

APEPL is leading in erection testing and commissioning of electrical power projects upto 220 KV, with layouts, designs and consultation. We paved an enthusiastic environment to achieve a benchmark of efficient working culture. Our qualified and skilled engineers are engrossed to define durable cost effective and protection concentrated, electrical solutions, we attained more than 150 generation and distribution project completions across the diverse domains. Being a licensed electrical contractor we take it as our obligation to fulfill all electrical compliances & norms.

APEPL is a service originated company hence, customer satisfaction is our top most priority and we are ever committed to support our clients and venture partners, we have professionals to actuate our growth as well as quality focussed delivery. We are grim with our philosophy "low margin large delivery" and hope it will define a new era of innovation.



## WE FOCUS ON

**01** **Best**  
**Product Quality**

**02** **Excellent**  
**Service**

**03** **Superb**  
**Performance**



## OUR TEAM

## Our Vision

Our vision is to be widely recognized within the industry and community for our continuing commitment to customer service, solution and satisfaction through excellence, innovation, quality standards and the impact of its pursuits.

## Our Mission

To create value addition for our customers by increasing their productivity in today's constantly evolving global business scenario. We distinguish ourselves through our capacity to create and introduce innovative multi disciplinary engineering products and solutions which spearhead the incorporation of our state-of-the-art technology and methodologies.



## Manufacturing and Servicing of:



Electrical Panel  
Manufacturing



Testing &  
Commissioning



MEP Projects  
/ Solutions



AMC Services  
& Maintenance

# OUR CORE VALUES



### INTEGRITY

We employ the highest ethical standards and believe that our continued success is based upon sustaining the relationships, that keep our business growing. We believe that open and honest communication is vital to the lasting success of the organisation.



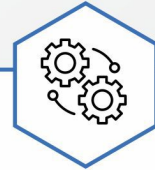
### EFFICIENCY

We remain accountable to our clients for the efficient execution of any project that we undertake. We engage our skills, techniques and knowledge to eliminate energy or cost losses in execution, and deliver best output to our clients



### TEAMWORK

We believe that an open culture characterized by mutual respect, sharing of ideas and a commitment to common goals contributes to the overall productivity of our organisation. Our system is such that each team member plays an important role by providing individual expertise.



### RELIABILITY


We are committed to create impact through our competence and excellence in professionalism. We believe that our unique solutions and services serve as a reflection of elevated engineering standards with a qualitative professional approach.



Our commitment to deliver best quality products assures that we provide our clients with the best technical solutions supported with all the important documentation and required certifications. We follow and maintain strict quality standards in all our business activities through internal assessment and client feedback.

# CENTRAL POWER RESEARCH INSTITUTE

## TEST REPORT



**CPRI**  
Date: 26 April 2024

Test Report Number: CPRIN/AHV2/02020

1) Test conducted : Degree of Protection - 65

Degree of Protection IP - XK

Date of test : 16 April 2024

Condition of the sample before test : New

### TEST RESULTS

Test Details	Test Description	Differential Pressure	Test Duration
The test object is placed inside a closed chamber in which fluorine powder (previously to maintain in suspension by air current) as per standard.	200 mm	8 hours	

Observations: No traces of calcium powder were observed inside the sample after IP-XK.


2) Degree of Protection IP - X5

Date of test: 16 April 2024

Test details: The sample was withdrawn from all the observations by means of hose nozzle with a diameter of 6.3 mm held at distance of 2 meters, delivery rate being maintained at 12.5 litres per minute as per standard. Test duration was 3.0 minutes.

Observations: No traces of water observed inside the sample after IPX5 test.

Conclusion: The sample tested comply with the requirements of clause no. 10.3 of IS/IEC 61439-1: 2011 & IS/IEC 61439-2: 2011 for the test conducted.



(Dr. Anand Singh)  
Test Engineer

Sheet 4 of 5

URL: [20222408HV1015F](http://20222408HV1015F)

Diagnose Electrical Testing

Group: Transmission Line Equipment & Accessories

HIGH VOLTAGE LABORATORY

REGIONAL TESTING LABORATORY, PLUT NO. 5A,  
INSTITUTIONAL AREA, SECTOR-6, KODAK-301005, INDIA.  
Ph: 011-26364545 and Mobile No. 9105-480023



# Infrastructure

Some of the distinctive attributes and feature of the infrastructure of these manufacturing units are.

- HSG 1.5KW LASER MACHINE.
- HANS 6KW LASER MACHINE.
- 80 TON PRESS BRAKE 2.5MTR LENGTH.
- 100 TON PRESS BRAKE 3MTR LENGTH.
- TRACK MIG 350 WELDING MACHINES
- EWM ELECTRA MIC WELDING MACHINES.
- CRIMPING MACHINE.
- FERRULE MACHINE.
- AUTOMATIC BUSBAR HEAT SHRINK MACHINE.
- CNC SHEARING MACHINE (3.1 METER).
- POWER PRESSES.
- PRE TREATMENT SHOP.
- POWDER COATING SHOP.
- FACILITIES OF CAD & SOLID WORKS.
- EXCELLENT FABRICATION FACILITIES.
- DRYERS AND SCREW FILTERS.
- BUSBAR BENDING, CUTTING & PUNCHING MACHINE.
- BATTERY OPERATED DRILLING MACHINES.





# Our Total Quality Management

Quality is the basic business principle for Amtech. We strive for customer satisfaction by continually improving processes, products, and services to ensure that we consistently meet or exceed customer requirements. Our commitment to our customers is demonstrated by a significant number of loyal and satisfied clients that we serve with our Total Quality Management approach. Our TQM applies to Sales, Procurement, Design, Process, Fabrication, Installation and Service for handling all kinds of projects across our specialised areas. We regard quality as an attitude, a culture, a way of life and a way of progress at Amtech. We have aligned our TQM with our belief i.e. "Think, Analyse, Anticipate, Act and Impact", which serves as a benchmark for our excellence.

*"Flaming enthusiasm, backed up by horse sense and persistence, is the quality that most frequently makes for success." Dale Carnegie*

## We Design and Manufacture Electrical Panels Keeping in Focus to

- Efficiency Enhancement
- Productivity Maximisation
- Plant Operation Optimisation
- Emission Reduction
- Life Cycle Cost Minimisation
- Regulatory Compliances Execution
- Human & Machinery Safety
- Breakdown Reduction

*Note : Our panels are enhanced with ultra temp sensitivity above 400A*

**IMPACT**  
INNOVATION +  
QUALITY + AMTECH



At Amtech, innovation and technology leadership are the cornerstones of our success and expansion, while sourcing, selection, logistics and implementation play pivotal roles in our objective to lead by example. We believe in creating a better future, where the possibilities are reality, and the outcomes can be the game changers, especially to meet the challenges of the modern world. We have built a way to innovate and generate a new culture, driven mainly by the support of our customers and employees. It was within this partnership that we consolidated the business success at Amtech. Moving forward, we want to become a prominent electrical solutions brand with national recognition and a leading exporter of electrical services and solutions with pride.

**We are all set to introduce HT VCB Panel (upto 33kv ) as well as CSS (Compact Sub-Station). We invite progressive dialogues from the forward-thinking organisations to keep powering solutions for the future and let be unite to aspire and achieve more.**



## Our Manufacturing (As per IEC 6149) Range

- Main L.T Distribution Panel
- Power Control Center Panel (PCC)
- Motor Control Center Panel (MCC)
- D.G. Synchronizing Panel
- PLC Based Auto Load Management LT Panel
- ATS & Changeover Panel
- Automatic Power Factor Correction Panel (APFC)
- Hybrid & AHF Panel
- VFD & Soft Starter Panel
- Drawout Type MCC, PCC, Distribution & Feeder Pillar Panel
- Air Insulated Bus Duct, Rising Main & Meter Board
- Cable Tray, Raceway & Junction Box



“What's dangerous,  
**is not to evolve.**”



# Electrical Panel Manufacturer

**"Our products...our Vouch..."**

One of the prime reasons behind the credibility and trustworthiness of AMTECH is the excellent quality of its products. Our products eminence is remarkable and renowned within the clients' circle. We manufacture with such precision and accuracy that it comply with all safety codes, compliance, regulation and guidelines. Our designing, drafting and crafting by educated & Skilled professionals. The products are designed and manufactured as per IEC 61439/1&2 with an application oriented aspect. Some of the distinct features of our products are.

- Safety and Security
- Steadfastness
- Serviceability
- Thermal stability
- Efficient design
- Durability
- Ease of operation



**Feeder Pillar Panel**



**Main LT Panel**



**AMTECH** designs, devises and crafts, its every product in its manufacturing units. The infrastructure of these manufacturing units complies with the standards and has highly advanced manufacturing facilities. Every manufactured product gains cent percent credibility for its genuineness, quality and validity. Our designing, drafting and crafting units are being well executed by educated, skilled and experienced professionals. These manufacturing units work perfectly under the expertise of numerous executive, engineers, and technical associates who know their job extremely well.



**Load Management Panel**



**PCC Panel**



**Isolator Panels (IP-65)**



**PDB Panel**



**Main LT Panel**



**Distribution Panel**



**Feeder Pillar Panel**



**Main LT Panel**



# Products



**VCB Panel**



**Bypass Panel**



**Changeover Panel**



**Distribution Panel**



**Feeder Pillar Panel**



**Fire Fighting Panel**



**APFCR Panel**



**UPS Panel**



**IP-67 Isolator Boxes**



# Testing & Commissioning

At Amtech, we are well concentrated in Testing and Commissioning of electrical power as well as control equipment because we understand that nuance lack in operation or protection can result severe fault which affect productivity and can cause blackout. We hold integrated engineering and management solution for diversified application of electrical energy.

In Testing we ensure the compliances and parameters as per NEC, IEC and IEEE, here commissioning always provide an assurance that operation and protection should be as per design & human safety factor is also considered to desist any hazard or electrocution.

## Our Service portfolio includes

### In House Testing Facilities

#### Switchgear (VCB/ACB/MCCB) Testing

- Contact Resistance Measurement
- Breaker Operation Timing Test
- Insulation Resistance
- Hi-pot
- CT (Ratio, Polarity & Knee-Point)
- PT Ratio
- Testing of inbuilt Release
- Over Current Protection Test
- Earth Fault Protection Test
- Different type of Current & Voltage Actuated Relays

#### Cable Testing

- Di-electric Strength Test
- Leakage Current Test
- Fault Locating & Solution
- Voltage Withstands Test (Hi-pot)

#### Equipment Testing

- Thermography
- Energy Audit
- Power Quality Analysis
- Operation Test of Programmable Controllers
- Lightning Arrester Testing
- Partial Discharge Test





## End-to-End Integrated SITC Solutions for Electrical Distribution & Infrastructure Projects

- Complete Range of Power & Distribution Transformers : (Oil Type and Dry Type)
- VCB Panels (11/33 kV, up to 4000 Amp)
- ACB (Up to 6300 Amp)
- Packaged Sub Stations (PSS) (11/33 kV, up to 5 MVA)
- Diesel & PNG Generators (500 & 2000 KVA)
- Bus Ducts, Rising Main & Track Busway (Up to 6300 Amp)
- 33 KV/11KV Substation Equipment (Outdoor C.T, PT, VCB, Relay Panel, Battery Bank)
- External Lighting Projects
- HT/LT Cable Project Solutions
- Operation and Maintenance Contracts
- Cable Tray & Raceways
- Earthing and Lightning Protection Projects

## Rental Solutions

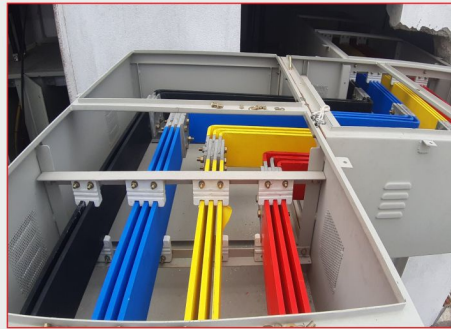
- Electrical Distribution Panels (Ready-to-Use & Customizable Solutions)
- Transformers (Oil and Dry Type)
- Diesel & PNG Generators
- Load Banks (Up to 2000 KVA)
- HVAC Equipment (Heating, Ventilation, Air Conditioning)







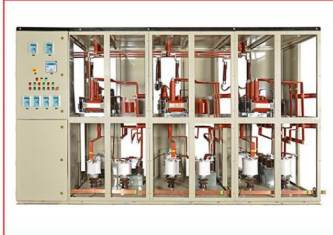
Compact Substation



Conventional Type Busduct



HT Panel



RTCC Panel



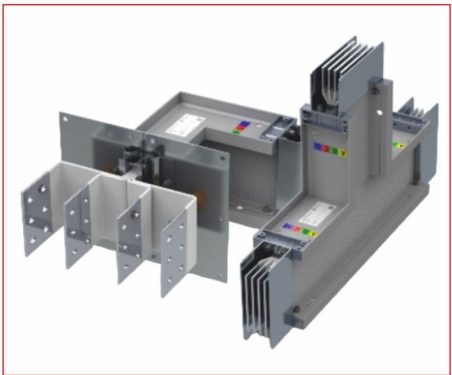
HT-RMU



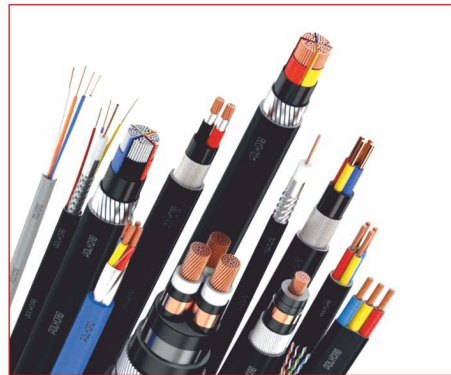
Gas Insulated Substation



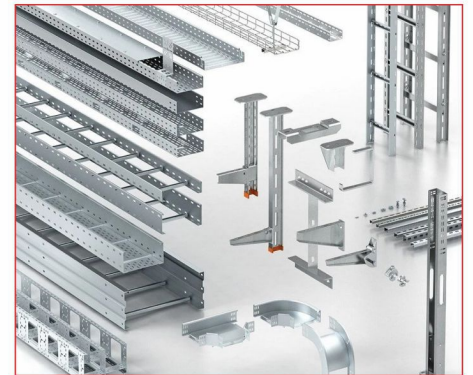
Transformer



Sandwich Type Busduct



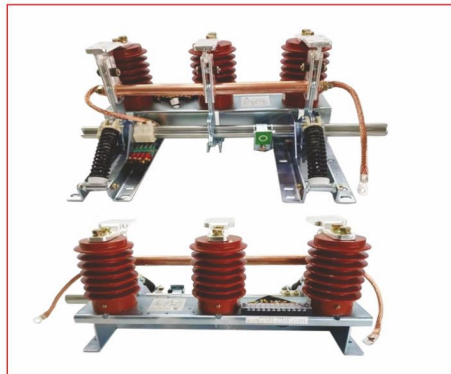
LT & HT Cables



Cable Tray



DG (Diesel Generator)



HT-Isolator



Earthing



Lightning Arrester



HV Load Bank



# MEP Projects

## (Mechanical, Electrical & Plumbing)

We are a leading provider of industrial and commercial MEP engineering and services in North India. We have a team of certified MEP professionals, who are capable of servicing projects of different types - HVAC, Fire & Plumbing Services. We MEP Projecat integrations to maximize energy efficiency, reduce operating costs, and streamline maintenance of all. With technical intelligence and superior service, our teams are creating healthy and comfortable environments, that will stand the test of time. It involves a scientific art and process of complete planning, designing and managing the systems & controls of the building, factories across all the necessary stages of construction procedures, and our professionals are highly trained having a great handle on the latest trends of mechanical updates ensuring our clients receive reliable, fast, and knowledgeable services. Our services and quality are recognised by the major corporate houses and the GOI.

Transformer & BBT  
Installation



DG & Panel Room



HVC Pipe Line



SMT Plant



Cooling Tower



## Our Services

### Mechanical HVAC

- Centralized Airconditioning Products
- Air Handling Unit & Cooling Towers
- Air Filtration & Cleaning System
- Process Chilled Water Piping & related Ancillary Works
- Design & Execution of Central AC System
- Design & Execution of Ventilation System
- VRF / VRV System
- Revamping & Retrofit of existing Cooling System (Chillers, AHU, Pumps & Cooling Towers etc.)
- Air Supply System (Ducted, Ductless & Flexible Ducting)
- CAMC & NAMC of all HVAC & Ventilation Equipment



# AMC Services & Maintenance

**Amtech** is well versed in maintenance services, we offer annual maintenance contract which ensure complete maintenance services at your premises. we have specialization in HV, MV and LV so, we take care of all the electrical panels and equipment. AMC services are typically defined in two categories,

**1.)** Comprehensive AMC.

**2.)** Non-Comprehensive AMC.

**A)** Comprehensive AMC consist of complete maintenance services which covers all the fault rectification as well as cost of spares that are being out of order, means; our clients would be care free after availing a comprehensive AMC. customer don't require any spare procurement, here we revive the system within confined time.

**B)** Non-Comprehensive AMC cover just breakdown revival and preventive maintenance services. Here, cost of spares is not included in contract so, spare procurement is always towards the client. We serve 24\*7 for critical breakdowns as we are working with diversified industries for last 20 years. so, we are well aware about nuance of electrical applications. We are consistently expanding our scope and paving new benchmarks. **Amtech** always quest customer focused solutions for electrical utilities e.g., HVAC, Fire Fighting, Pump etc. Sustainability is embedded into our long-term strategy for growth. We are really a confluence of Design, manufacturing, project, AMC and operatable delivery, we are committed to define new bench mark for precise protection sensitiveness as well as an ease of operation.

**Below are few Value-added services after availing our annual maintenance contract :-**

- Free electrical and utility consultation
- As Built SLD designing for allied system
- Seamless effort for energy and power conservation

**We are working with diversified industries are: -**

- |                                    |                                |
|------------------------------------|--------------------------------|
| • Hospitality                      | • Printing Press               |
| • Hotels                           | • Corporate Buildings          |
| • Beverage Industries              | • Commercial Buildings & Malls |
| • Elastomer Manufacturers          | • IT Industries                |
| • Power Generation Plant           | • Educational Institutions     |
| • Research And Development Centers | • Housing Societies            |

**“If you want  
to shine like a sun,  
first burn like a sun.”**





# Automation & Energy Management Solutions

ॐ अंतर्गत ब्दजतवस ॐ मपिबपमदज व्वमतंजपवदे ॐ प्दजमससपहमदज डवदपजवतपदह

At Amtech Power Engineering Pvt. Ltd., we specialize in delivering cutting-edge automation and energy management solutions tailored for modern industries. Our technology-driven systems enhance productivity, reduce energy costs, and provide real-time insights — all from a single control point.



## Our Expertise

### Factory Automation

- Customised End-to-end automation for industrial manufacturing processes
- PLC-based control panels for machinery & process systems
- Smart sensors, VFDs, and industrial networking
- System integration and remote diagnostics
- Real-time data acquisition & reporting

### Conveyor Automation

- Intelligent start/stop control
- Load balancing and speed regulation
- Interlocking systems for safety and efficiency
- Real-time status monitoring and alerts

## Product Range

- Siemens, Schneider, Allen Bradley, Mitsubishi, Yaskawa, PLCs
- Delta, Schneider, Crompton, ABB, Mitsubishi VFDs
- SCADA To Oware (ABB, Wonderware, Wincc, In du SoO Etc.)
- Mulθ- func θon energy meters & smart analyzers
- Industrial HMI Touch Panels
- Web Dashboards for EMS





# Channel Partner & Trading Items



- ACB UPTO 6300A
- 11/33KV HT VCB PANELS
- 11/33KV RMU
- 11/33KV CSS
- MCCB UPTO 800A
- ENERGY METERS
- RELAY PANELS
- CONTROL RELAYS
- NUMERICAL RELAYS
- ISOLATORS



- WIRES
- ARMOURED / UNARMOURED CABLES
- 11/33KV HT CABLES
- SOLAR CABLES
- SHIELDED WIRE
- TELEPHONE AND FIRE CABLES



- POWER TRANSFORMER
- DRY TYPE TRANSFORMERS
- INDOOR/OUTDOOR VCB
- PANELS
- VCB RELAY PANELS
- PROTECTION RELAYS
- CT/PT



- SANDWICH TYPE BUSDUCTS UPTO 6300A
- RISING MAINS
- TRACK BUSWAY
- AIR INSULATED BUS DUCTS



- DIESEL GENERATORS
- GAS GENARATORS



- CPVC FITTINGS
- UPVC FITTINGS
- ADHESIVES
- HDPE PIPES



- FLOOD LIGHTS
- STREET LIGHTS
- HIGH BAY LIGHTS
- DECORATIVE LIGHTS
- HYBRID SOLAR LIGHTS
- CEILLING FANS



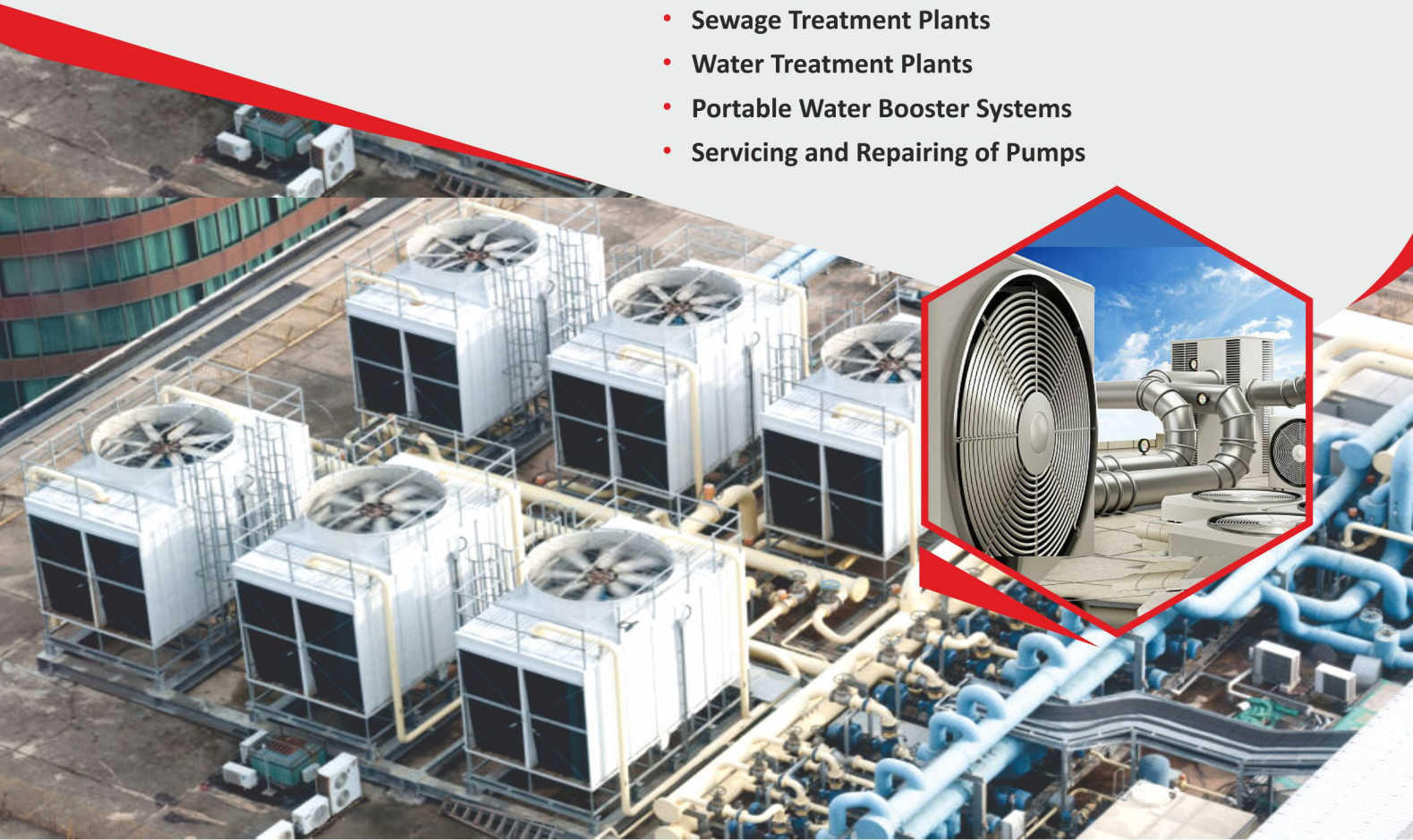
- CABLE GLANDS
- CABLE LUGS
- WEATHER PROOF GLANDS
- STRAIGHT THROUGH JOINTS
- HT TERMINATION KITS
- HT INSULATION SLEEVES



- GI CHEMICAL EARTHINGS
- COPPER CHEMICAL EARTHINGS
- LIGHTING ARRESTORS
- SURGE SUPPRESSORS



- Design & Installation of Plumbing Panel
- Drainage & Sanitary Systems
- Pump & Tank Installation
- Complete Piping Works, Sanitary (CPVC, UPVC, CI, GI)
- Sewage Treatment Plants
- Water Treatment Plants
- Portable Water Booster Systems
- Servicing and Repairing of Pumps



Briskly climate change over the world requires that outdoor air must be heated and cooled to provide acceptable thermal comfort for building occupants. which introduced HVAC systems. itis a close loop contro system provides control on physical condition such as relative humidity, pressure difference and bulb temperature.

Central HVAC system consist of AHUs (Air handling unit) that serve multiple rooms in lieu of unit ventilators or individual heat pumps. Although there are many different types of air handling units, for general IAQ implications, air handling units can be divided into two groups: unit ventilators and individual heat pump units that serve a single room without ducts; and central air handling units that serve several rooms via duct work.

- Quieter and therefore more likely to be turned on or left on by teachers and staff.
- Less drafty due to multiple supplies and a return that is away from occupants.
- Better at controlling humidity and condensed moisture drainage.
- Easier to maintain due to reduced number of components and few units to access.
- More space around units and can be accessed without interfering with class activities.
- Space for higher efficiency air filters and more surface area.
- Made of heavier duty components.
- Less likely to have quantity of outdoor air supply inadvertently reduced.



# Our Valuable Clients







**Registered at :-**



# AMTECH POWER ENGINEERING PVT. LTD.

- Electrical LV Panel Manufacturing • MEP Projects & Solutions • AMC Services & Maintenance
- Testing & Commissioning of H.T, L.T. Installations

**Head Office :** Plot No.- 32, Udyog Vihar Extension, Ecotech- II, Surajpur,  
Greater Noida- 201306, (U.P.) India

**Project & Maintenance Office :** D- 382, 1st Floor, Sector- 10, Noida- 201301 (U.P.) India

**Phone :** +91-120- 4371633, +91- 9911447728

**E-mail :** amtech.apepl@gmail.com, engineers.ape@gmail.com

**Website :** www.amtechpower.co.in